

---

## 220W BLDC CORDLESS VACUUM CLEANER

### INSTRUCTION MANUAL

## Contents

Safety Introduction	2
Product Introduction	4
Product Operation	6
Product Maintenance	9
Trouble Shooting	11

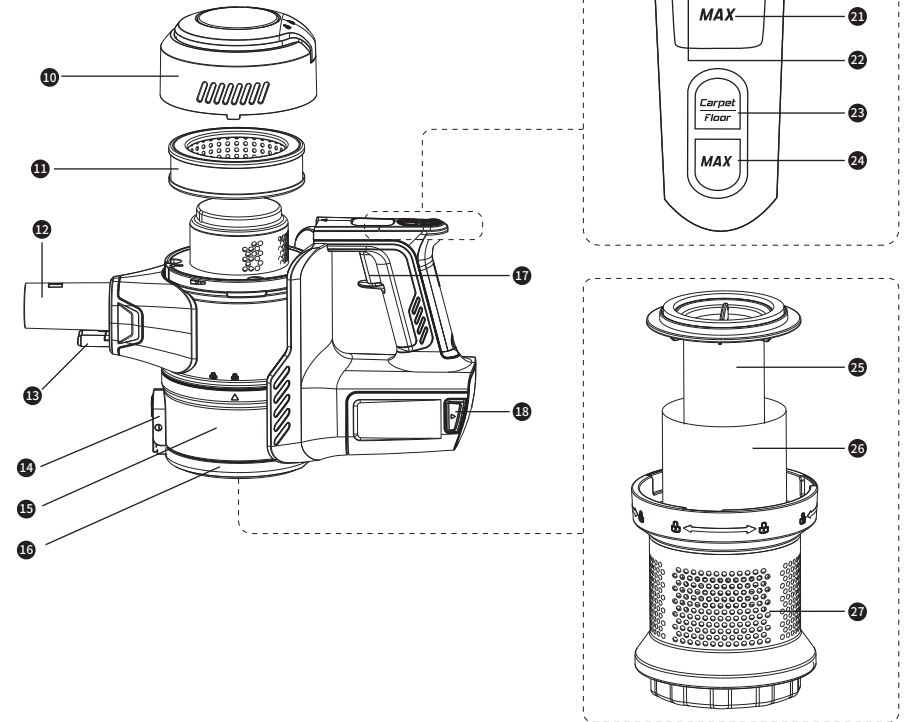
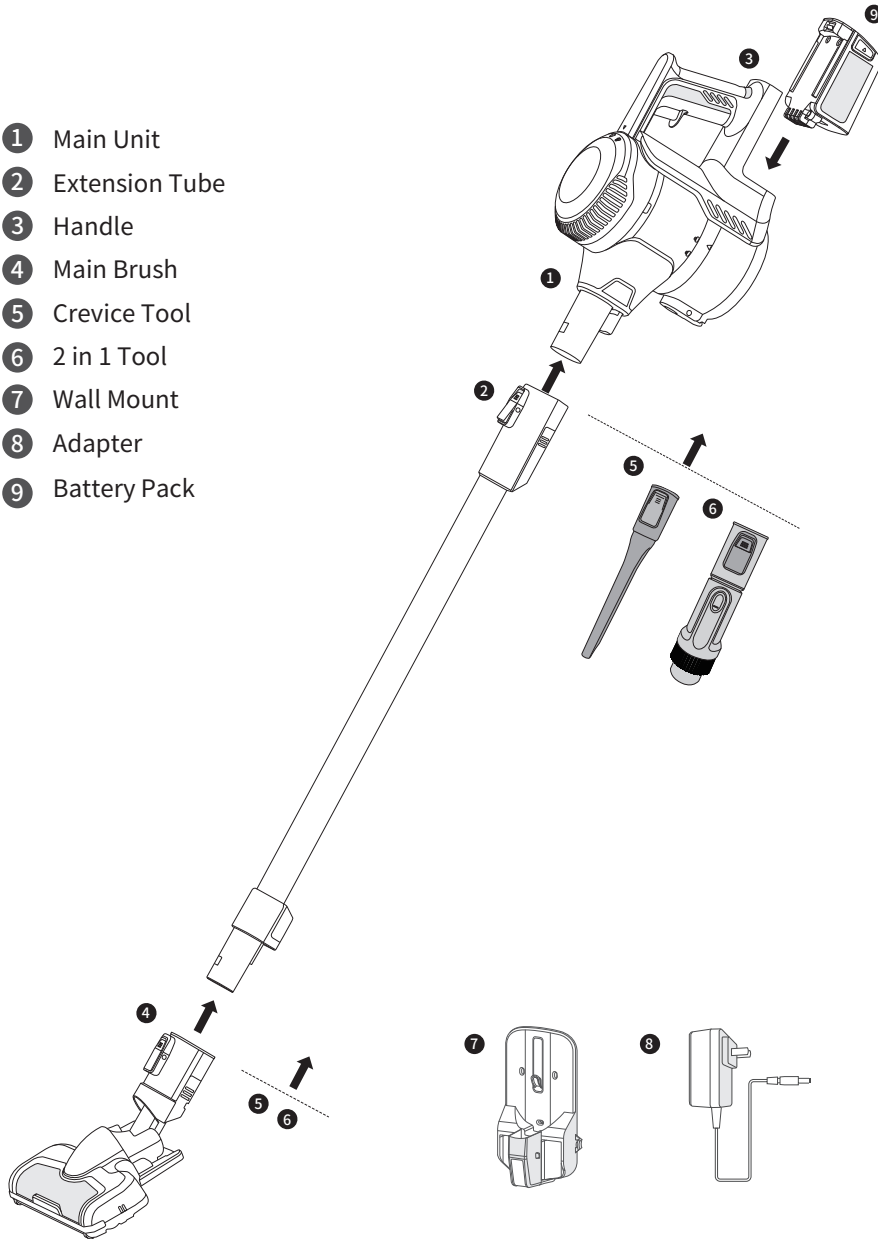
## Safety Introduction

1. Only the certified technician may disassemble this product. Users are strictly not allowed to disassemble this product.
2. This product shall only be charged using the included power adapter. Other power adapters may cause damages to this product.
3. Do not touch power cord, plug or adapter with wet hands.
4. Avoid curtains, any kind of strings or user's body part wrapping up on the wheel.
5. Keep this product away from cigarette stubs, lighters or flame.
6. To clean the product, this product must be fully charged before any cleaning process.
7. Do not over-bend the power cord, or place heavy or sharp objects on this product.
8. This product is intended for indoor use only, do not use this product outdoors.
9. Do not place object (e.g. human) with more than 10KG weight on this product.
10. Do not use this product in wet or moist environment (e.g. bathroom).
11. Before using this product, please remove any fragile objects (e.g. glasses, lamps etc) from the floor. Also removes any objects that may be wrapped up to the side brushes or may block the suction inlet.
12. Do not put this product on table or benches to avoid falling off.

- 
13. While delivering or if do not use the product for long time, please turn it off from the bottom.
  14. Before charging, please check whether the power adapter and socket is connected well.
  15. When this product is cleaning the room, please inform other members to avoid causing them to fall.
  16. When the dust bin is full of dust, empty the dust bin before using this product.
  17. This product is functioning at temperature range within 0°C - 40°C.
  18. Do not use this product in high-temperature environment.
  19. Please remove batteries form this product before disposal.
  20. Replace the batteries of the remote control according to conditions. Depleted batteries should be disposed safely.
  21. The appliance is not to be used by persons (including children) with reduced physical, sensory or mental capabilities, or lack of experience and knowledge, unless they have been given supervision or instruction.
  22. Children being supervised not to play with the appliance.
  23. The appliance is only to be used with the power supply unit provided with the appliance.
  24. The appliance must only be supplied at safety extra low voltage corresponding to the marking on the appliance.
  25. The battery must be removed from the appliance before it is scrapped;
    - the appliance must be disconnected from the supply mains when removing the battery;
    - the battery is to be disposed of safely.

# Product Introduction

- 1 Main Unit
- 2 Extension Tube
- 3 Handle
- 4 Main Brush
- 5 Crevice Tool
- 6 2 in 1 Tool
- 7 Wall Mount
- 8 Adapter
- 9 Battery Pack



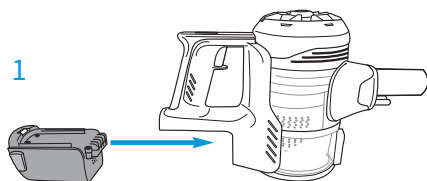
- 10 Air Outlet Cover
- 11 Air Outlet Filter
- 12 Base Nozzle
- 13 Power Supply Contacts
- 14 Dust Empty Button
- 15 Dust Cup
- 16 Bottom Lid
- 17 Power Trigger
- 18 Battery Release Button
- 19 Battery Status Indicator
- 20 Hard Floor Mode Indicator
- 21 MAX Power Indicator
- 22 Carpet Mode Indicator
- 23 Carpet/Hard Floor Mode Button
- 24 MAX Button
- 25 Fabric Filter
- 26 Foam Filter
- 27 Filter Cover



## Product Operation

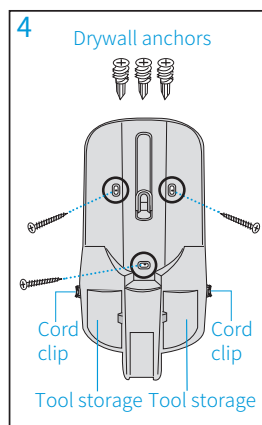
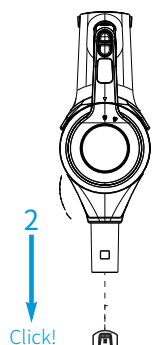
### Easy assembly

- 01 Slide battery onto hand vacuum until firmly attached (Fig. 1).
- 02 Slide wand onto hand vacuum until it clicks (Fig. 2).
- 03 Push wand into motorized floor nozzle until it clicks (Fig. 3).



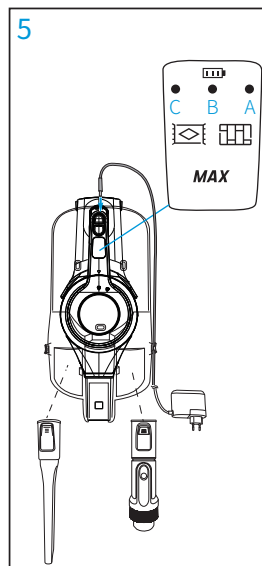
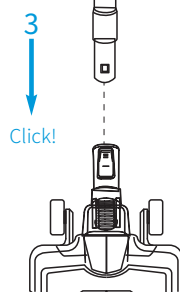
### How to install wall mount

- 01 Choose location near power outlet. Locate point high enough on wall to allow wand and motorized floor nozzle to hang freely.
- 02 Place mount against wall and use pencil to mark drill holes.
- 03 Drill holes (with 1/4" bit) and insert drywall anchors. Insert screws through holes on mount and tighten until firmly attached (Fig. 4).



### How to charge battery and store accessories

- 01 Place assembled vacuum cleaner on wall mount.
- 02 Plug charger into power outlet and then into charger port on handle (Fig. 5).
- 03 Loop charger cord into clips on sides of wall mount.
- 04 Snap tool(s) into tool storage areas (Fig. 5).



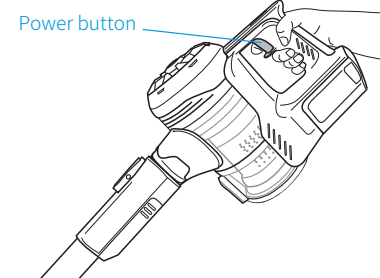
### Battery indicator lights show level of charge (Fig. 5):

- A. Fully charged
- B. Half charged
- C. Low power

- Indicator lights stop blinking when fully charged.
- Charge battery fully before using for the first time. This may take up to four hours.

### How to use cleaner for cleaning floors

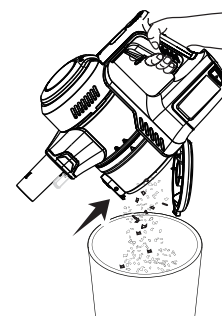
- 01 Click power button once to start.
- 02 Using motorized floor nozzle, glide back and forth on area to be cleaned. Avoid oversized or sharp items (such as screws) with cleaner.
- 03 Twist wrist to engage swivel function.
- 04 When done, click power button once to stop motor.



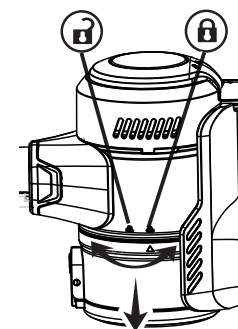
### Empty dust cup after every use

There are two ways to empty the dust cup:

- 01 Hold cleaner over waste basket. Press lever to release bottom lid of dust cup to empty debris.



- 02 Remove dust cup from hand vacuum by twisting to 'unlock' position. Once emptied, reattach dust cup by lining up arrow and 'unlock' position. Twist dust cup until arrow lines up with 'locked' position.

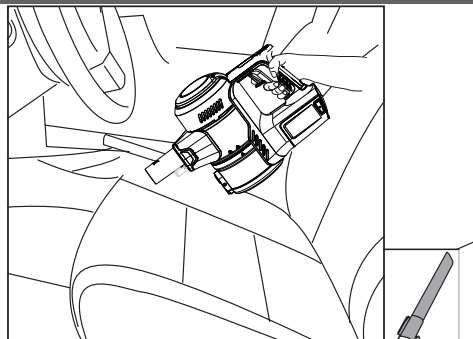


## Product Operation

### How to use hand vacuum and accessories

The hand vacuum can be used with or without tools.

- 01** To use without tools, press release button and remove wand. Collect debris directly with hand vacuum nozzle.



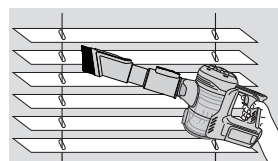
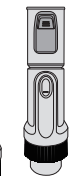
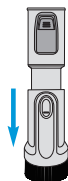
- 02** To use tools with wand, press release button to remove motorized floor nozzle. Slide tool onto end of wand until it clicks.  
To use tools with hand vacuum only, press release button to remove wand. Slide tool onto hand vacuum until it clicks.



**Crevice tool:** Cleans hard-to-reach areas such as corners, baseboard edges, dryer vents, chairs and sofas.



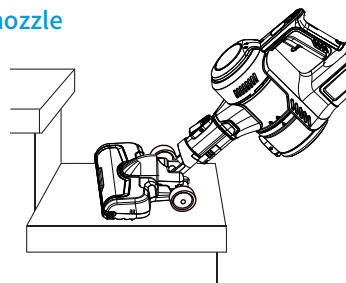
**2-in-1 upholstery tool:** Use brush to vacuum blinds, vents or upholstered surfaces. Use felt portion to clean delicate surfaces. To switch between felt and brush portions, press thumb release and slide brush up or down.



### How to use hand vacuum and motorized floor nozzle

Ideal for cleaning stairs.

- 01** Press release button to remove wand from hand vacuum. Attach motorized floor nozzle directly to hand vacuum until it clicks.  
**02** Click power button once to start.



**Caution**

**Moving parts!** Always turn off hand vacuum before attaching accessories.

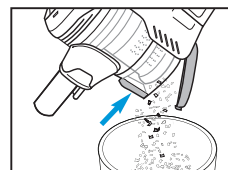
## Product Maintenance

Never operate vacuum cleaner without all filters, filter screen and dust cup in proper position.

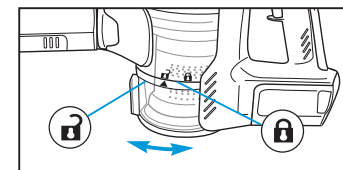
### Dust cup – Empty after each use

There are two ways to empty the dust cup:

- 01** Hold over wastebasket and push lever to release bottom lid. Debris will empty.



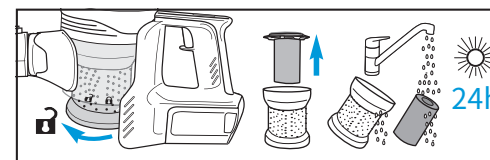
- 02** Remove dust cup by twisting to 'unlock' position. Empty debris. Reattach dust cup and twist to 'lock' position.



### Washable dust cup filter – clean monthly

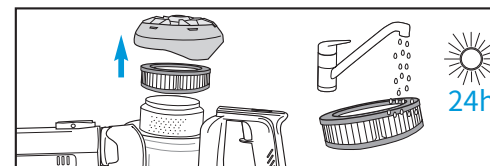
- 01** Twist dust cup and remove.  
**02** Twist filter screen and remove.  
**03** Lift out foam filter and holder.  
**04** Rinse and dry THOROUGHLY.

- 05** Place foam filter and holder in filter screen.  
**06** Twist filter screen to 'lock'.  
**07** Reattach dust cup and twist to 'lock'.



### Washable post-motor filter – clean every 6 months

- 01** Twist filter cover and remove.  
**02** Lift out post-motor filter.  
**03** Shake to remove dust.  
**04** Every 6 months, replace filter or rinse and dry THOROUGHLY.  
**05** Reposition filter and cover and twist to 'lock'.



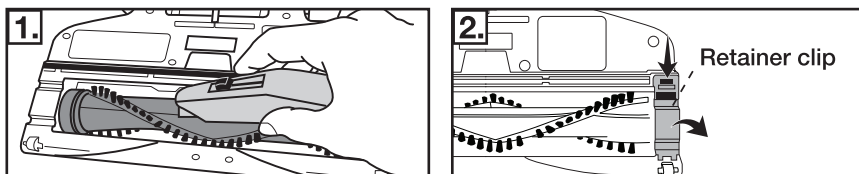
**Caution**

**Moving parts!** Recharge cleaner after each use

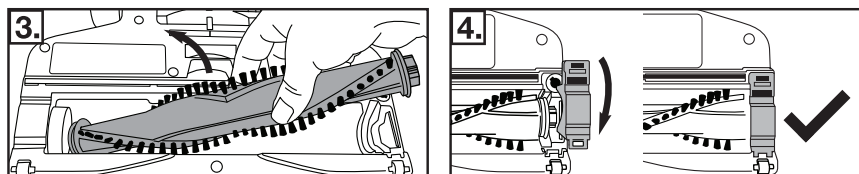
## Product Maintenance

### Washable brushroll – clean frequently

- 01 Place motorized floor nozzle upside down. Use fingers to remove clog or debris. Or use scissors or knife to cut strings and threads if necessary.



- 02 If debris cannot be removed easily, remove retainer clip to access brushroll. Using flathead screwdriver or coin, turn screw to the 'unlock' position.



- 03 Remove the brushroll and clean debris.

- 04 To reassemble:
- 1). Align one end of brushroll with floor nozzle gear.
  - 2). Press other end into slot.
  - 3). Hook retainer clip under tab and press down.
  - 4). Insert screw and turn to 'lock' position.

## TROUBLESHOOTING

In case of malfunction, please refer to the following table

Problem	Solution
Motor will not start	<ul style="list-style-type: none"><li>- Make sure cleaner is fully powered.</li><li>- Push charger securely into electrical outlet, try another outlet or check circuit breaker.</li><li>- See detailed "thermal cut-off" instructions above.</li></ul>
Charging indicator lights are not lit while charging	<ul style="list-style-type: none"><li>- Make sure charger is securely inserted into electrical outlet.</li><li>- Make sure charging plug is securely inserted into handle.</li><li>- Indicator lights stop blinking when fully charged.</li></ul>
Not enough suction power	<ul style="list-style-type: none"><li>- Empty dust cup and clean or change filters. See maintenance instructions.</li><li>- Make sure cleaner is fully powered. Charge battery.</li><li>- Remove clogs that restrict the airflow.</li></ul>
Not enough running time	<ul style="list-style-type: none"><li>- Make sure cleaner is fully powered.</li><li>- Charge battery for 4 hours before using.</li></ul>
Brushroll will not turn	<ul style="list-style-type: none"><li>- Check brushroll for debris. See maintenance instructions.</li></ul>

If the problem still can't be solved, please contact local service center.

## Discarding the vacuum and battery pack



Before you discard this vacuum, dispose of battery in an environmentally safe manner. Do not discard battery with your regular household trash.



## Important battery disposal information.



**To preserve natural resources, please recycle or dispose of expired battery pack properly.** This product contains a lithium-ion battery. It must be disposed of properly. Local laws may prohibit disposal of lithium-ion batteries in ordinary trash. Consult your local waste authority for information regarding available recycling and/or disposal options.